

NH fuse-switch-disconnector size 00, 160 A, busbar mounted, connection top / bottom (33079)



## Description

### Article

Part No.: 33079

QUADRON® 60Classic

NH fuse-switch-disconnector size 00, 160 A, busbar mounted, connection top / bottom screw M8

suitable for 5-pole system

for busbars 12, 15, 20, 25, 30 x 5, 10 and section busbars

### System

60Classic

Product group 09

Subgroup 24

pack size 1

EAN 4021267330798

catalog page 2019 : 3.19, 3.30

eCl@ss 6.1 27142108  
eCl@ss 7.1 27142108  
ETIM 4.0 EC001040  
ETIM 5.0 EC001040

## Approvals

### Standards

IEC 60947-1:2007 + A1:2010 + A2:2014  
IEC 60947-3:2008 + A1:2012 + A2:2015  
GB/T 14048.3

### Approvals

IEC (CB) , UL , VDE , CCC , DNV GL



for UL feeder circuits >250V

type number: QCB-NH00

UL file: E230163, UL category (for USA): IZLT2 <http://www.ul.com>  
CCC certificate: 2010010302403934

## Product data

for fuse-links size: NH 000, NH 00  
fuse-link acc. to standard: IEC / HD 60269-2  
permitted power dissipation of the fuse-link: 12 W

### Details IEC

#### Standards

IEC 60947-1:2007 + A1:2010 + A2:2014  
IEC 60947-3:2008 + A1:2012 + A2:2015  
GB/T 14048.3

#### Electrical data IEC

Rated current (IEC): 160 A  
rated voltage (IEC) AC: 690 V

rated voltage (IEC) DC: 440  
V

rated isolation voltage  $U_i$  AC: 800  
V

rated isolation voltage  $U_i$  DC: 500  
V

rated surge voltage  $U_{imp}$ : 6 kV

cond. short-circuit current with fuses (AC): 50 kA / 690  
V

approved with fuse links of operation class: gG

power dissipation of the article:

The power dissipation at a typical load of 80% of the rated current results to 11.3 W.

(The power dissipation for operation with rated current would be 17.7 W.)

### Supplementary data IEC

The following values have been verified with tests under certain conditions. Please ask Wöhner for this conditions before designing your panel.

max. permitted voltage (IEC) DC: 800  
V

A fuse-combination unit acc. to IEC 60947-3 can only be operated at a higher voltage than its rated voltage, if it is used as a fuse-disconnector without breaking capacity, up to its max. rated insulation voltage and labelled as such.

Entsprechend den angegebenen AC- und DC- Schalteigenschaften und unter Berücksichtigung der Überlastbedingungen, sind gewisse Abstände zu geerdeten Metallteilen einzuhalten. Nähere Informationen auf Anfrage.

Bei Dauerbetrieb von mehreren Geräten nebeneinander ist der Bemessungsbelastungsfaktor nach VDE 0660 Teil 500 / EN60439-1, Tabelle 1 zu beachten.

System component: degree of protection IP30 at front as per DIN EN 60529, degree of protection near terminal depends on installation

adapter module: front side degree of protection IP20 as per DIN EN 60529 (finger-safe)

## Details UL

### Standards

UL 4248-1

### Electrical data UL

rated current (UL): 160 A

rated voltage (UL) AC: 600 V

SCCR: 100 kA

### Mechanical data

W x H x D: 106 x 200 x 97

weight: 100 kg/100

poles: 3-pole

for busbars: 12, 15, 20, 25, 30 x 5, 10 and section busbars

front degree of protection: IP30

Busbar connection:

externally tensioned contacting,

convenient click mechanism,

simple conversion of the combination bases from 5 to 10mm-thick busbars

### Terminal points

Schraube M8

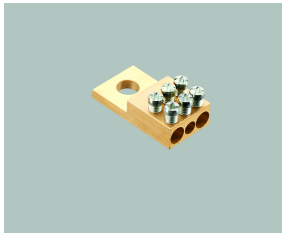
Schellenanschluß (im Lieferumfang enthalten): Cu 1,5 -70mm<sup>2</sup> rm, f+AE; lam. Cu 12x1-10;

3 Nm Drehmoment

## Material properties

Main body:	temperature stability 125°C, self-extinguishing in acc. to UL 94, creepage resistance CTI 600, halogen-free
Shock protection cover:	temperature stability 125°C, self-extinguishing in acc. to UL 94, creepage resistance CTI 200
Handle:	temperature stability 125°C, self-extinguishing in acc. to UL 94, creepage resistance CTI 200
Adapter plate:	temperature stability 125°C, self-extinguishing in acc. to UL 94, creepage resistance CTI 200
Contacts:	spring-loaded copper contacts, silver plated

## Accessories



**01182**

tunnel terminal for screw connection M8

1x 2.5 - 16 mm<sup>2</sup> + 2x 2.5 - 25 mm<sup>2</sup>

NH 00

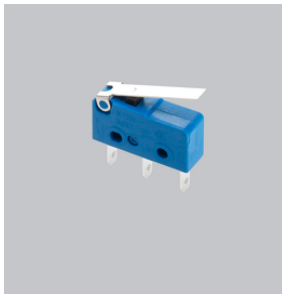


**03849**

lid interlock

for sealing wire

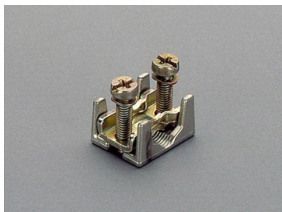
Size 00



**33156**

pilot switch

changeover 250 V AC / 5 A, 30 V DC / 4 A

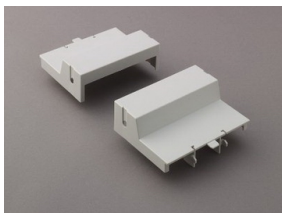


**33224**

prism terminal, single, for Cu and Al cables

16 - 70 mm<sup>2</sup>

NH 00



**33315**

trim cover, 2 parts

for NH-LTS size 00

size 00

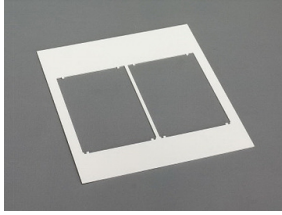


**33317**

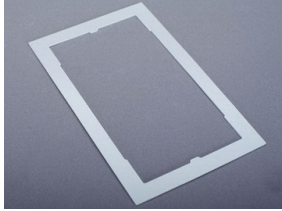
trim strip, attachable at side

for NH-LTS size 00

size 00



**78105**  
trim frame, double  
232 x 210, not for 33221, 33222  
size 00



**78893**  
trim frame, single  
130 x 210, not for 33221, 33222  
size 00



**79811**  
cover for cable lugs, top / bottom attachable  
for 33200, 33208, 33329, 33394, 33398, 33420  
NH 00